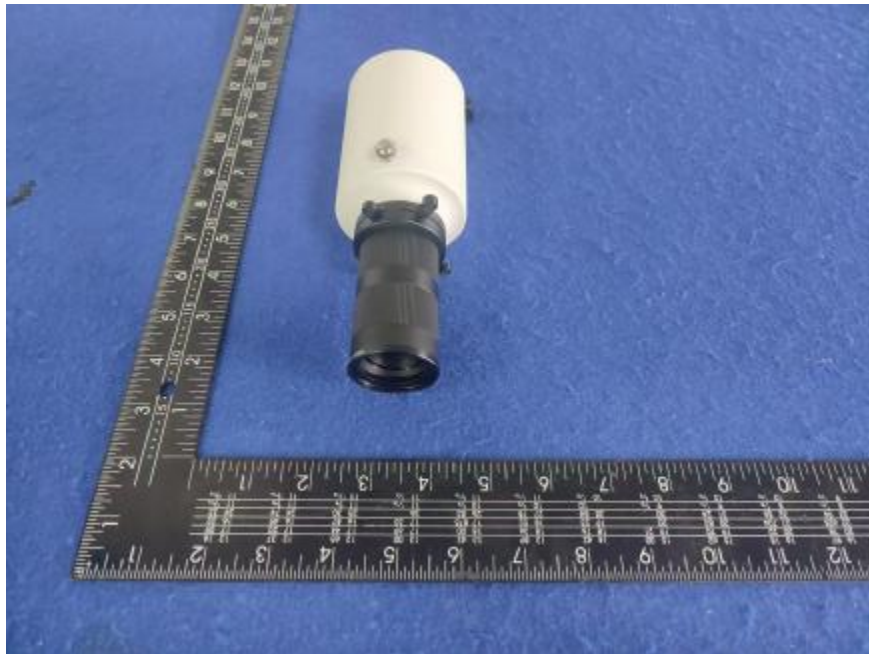


Luminaire Photograph



Light Output Ratio:	21.7%	
Luminaire Power:	14.56 W	
SHR Nominal:	0.00	Calculated using the TM5
SHR Maximum:	0.05	fine grid method.

C Range: 0 - 360DEG
C Interval: 30.0DEG
Test Speed: HIGH
Temperature: 25.3 °C
Operators: zoe
Test Date: 2025-1-8

Range: 0 - 180DEG
Interval: 1.0DEG
Test System: EVERFINE GO-SPEX500_V1 SYSTEM V2.00.461
Humidity: 65.0%
Test Distance: 3.160m [K=1.0000]
Remarks: LAMP: BXRE-30H1000-A-83 Ra: 95
LENS: SDX-Mini-Z2035-WH 20R
NOT DRIVER: 48V
30minutes warm-up

LUMINOUS INTENSITY DISTRIBUTION DIAGRAM

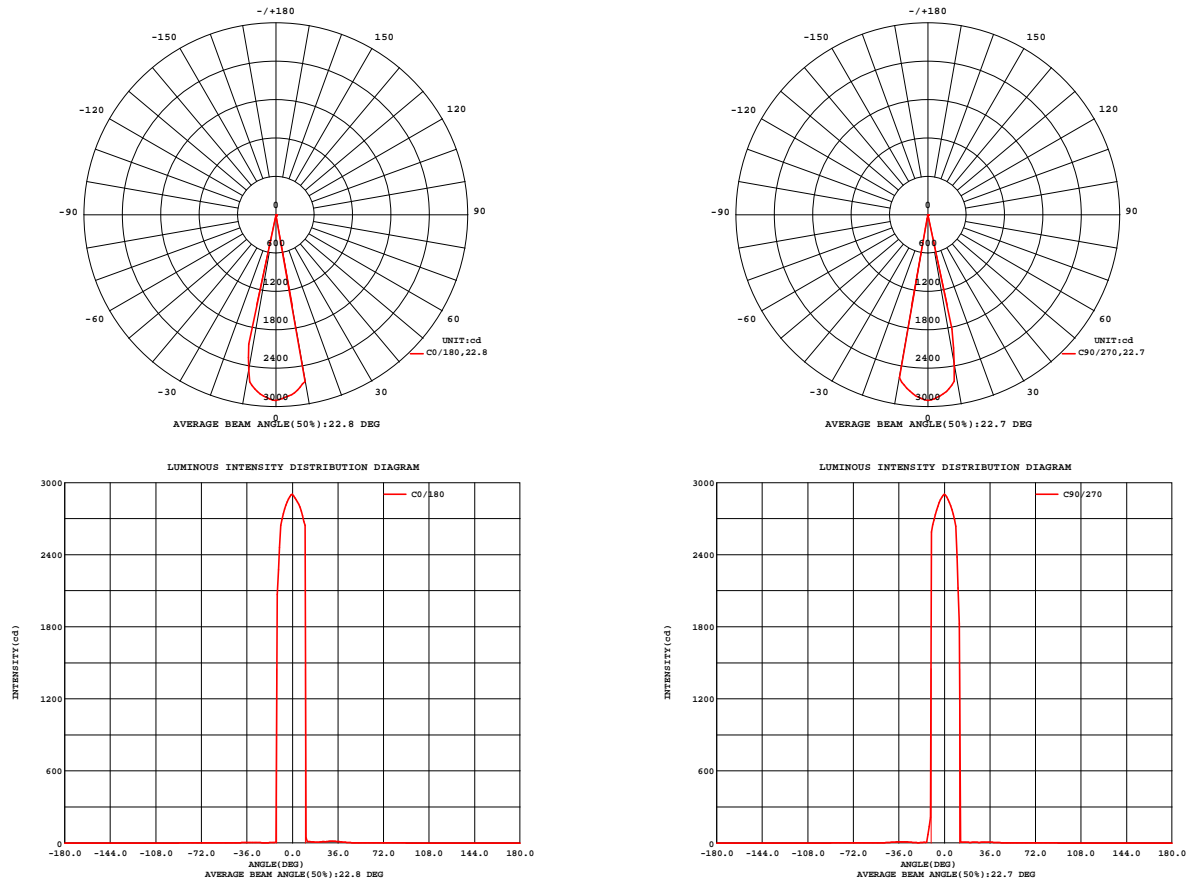


Fig. C0/C180

Fig. C90/C270

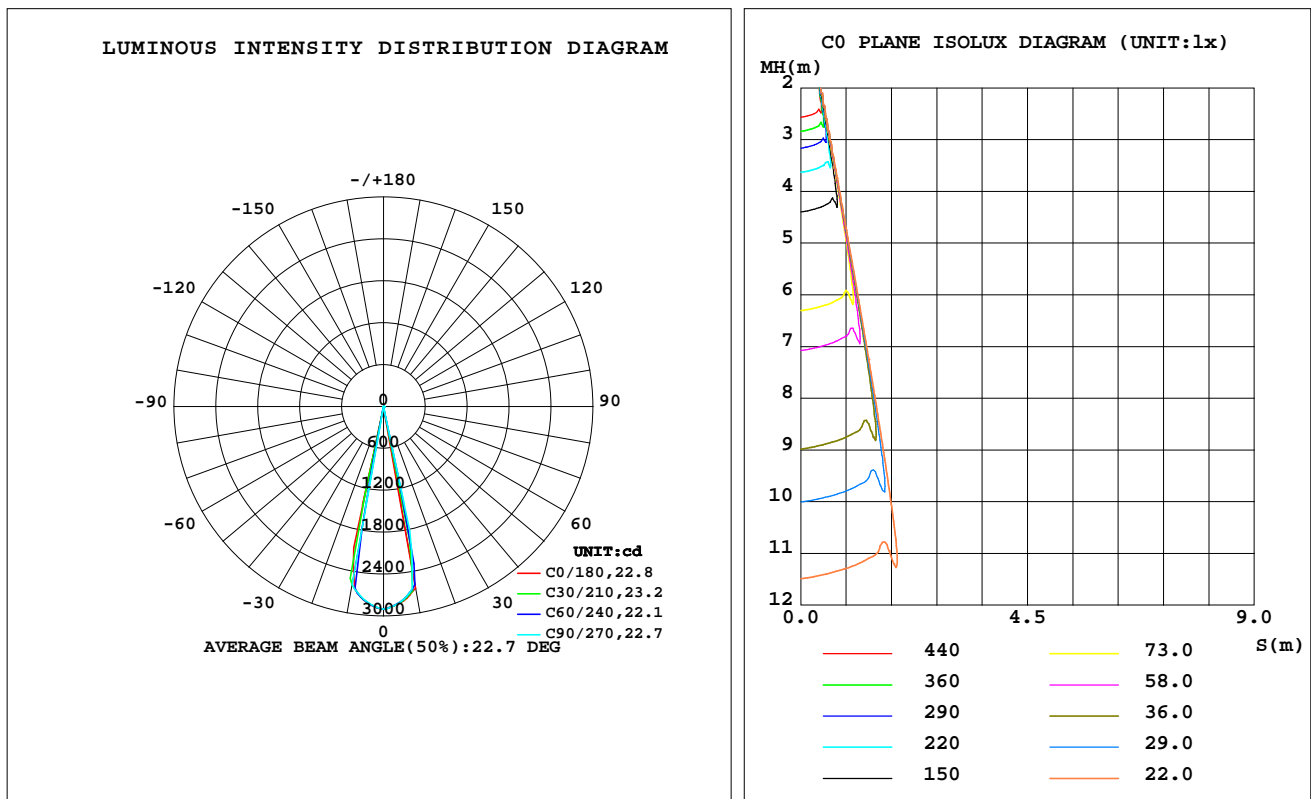
C Range: 0 - 360DEG
C Interval: 30.0DEG
Test Speed: HIGH
Temperature:25.3℃
Operators:zoe
Test Date:2025-1-8

Range: 0 - 180DEG
Interval: 1.0DEG
Test System:EVERFINE GO-SPEX500_V1 SYSTEM V2.00.461
Humidity:65.0%
Test Distance:3.160m [K=1.0000]
Remarks: LAMP:BXRE-30H1000-A-83 Ra:95
LENS:SDX-Mini-Z2035-WH 20R
NOT DRIVER:48V
30minutes warm-up

LUMINAIRE PHOTOMETRIC TEST REPORT

Test:U:47.997V I:0.3033A P:14.557W PF:1.0000 Freq:0Hz Lamp Flux:1597.41x1 lm		
NAME: OZ48-SBF-64	TYPE:	WEIGHT:
SPEC.: 3000K	DIM.:	SERIAL No.: 2501080040
MFR.: RISE	SUR.: 0.00101736m2	Shielding Angle:

DATA OF LAMP		PHOTOMETRIC DATA Eff: 23.76 lm/W			
MODEL	Brideglux	I _{max} (cd)	2901	S/MH(C0/180)	0.32
NOMINAL POWER(W)	15	LOR(%)	21.7	S/MH(C90/270)	0.27
RATED VOLTAGE(V)	48	TOTAL FLUX(lm)	345.85	UP,DN(C0-180)	0.0,11.1
NOMINAL FLUX(lm)	1597.41	CIE CLASS	DIRECT	UP,DN(C180-360)	0.0,10.5
LAMPS INSIDE	1	up(%)	0.0	CIBSE SHR NOM	0.00
TEST VOLTAGE(V)	48	down(%)	21.7	CIBSE SHR MAX	0.05



C Range: 0 - 360DEG
C Interval: 30.0DEG
Test Speed: HIGH
Temperature:25.3℃
Operators:zoe
Test Date:2025-1-8

Range: 0 - 180DEG
Interval: 1.0DEG
Test System:EVERFINE GO-SPEX500_V1 SYSTEM V2.00.461
Humidity:65.0%
Test Distance:3.160m [K=1.0000]
Remarks: LAMP:BXRE-30H1000-A-83 Ra:95
LENS:SDX-Mini-Z2035-WH 20R
NOT DRIVER:48V
30minutes warm-up

ZONAL FLUX DIAGRAM

ZONAL FLUX DIAGRAM:

	C0	C45	C90	C135	C180	C225	C270	C315		zone	total	%lum,lamp
10	2645	2462	2380	2505	2460	2185	2589	2449	0- 10	259.9	259.9	75.2,16.3
20	6.208	5.287	5.307	5.090	2.214	2.271	2.091	3.338	10- 20	75.94	335.9	97.1,21
30	14.80	9.006	5.883	3.409	3.278	4.863	8.941	13.76	20- 30	2.866	338.7	97.9,21.2
40	7.812	6.368	4.946	2.709	2.757	4.451	6.979	7.604	30- 40	4.592	343.3	99.3,21.5
50	0.6307	0.7445	0.6490	0.8666	0.9126	0.8339	0.7432	0.6486	40- 50	2.215	345.6	99.9,21.6
60	0.0423	0.0612	0.0915	0.1086	0.1139	0.0907	0.0570	0.0393	50- 60	0.2461	345.8	100,21.6
70	0.0130	0.0124	0.0192	0.0207	0.0244	0.0185	0.0112	0.0065	60- 70	0.0324	345.8	100,21.6
80	0.0114	0.0019	0.0090	0.0041	0.0099	0.0036	0.0075	0.0022	70- 80	0.0088	345.8	100,21.7
90	0	0	0	0	0	0	0	0	80- 90	0.0044	345.8	100,21.7
100	0	0	0	0	0	0	0	0	90-100	0	345.8	100,21.7
110	0	0	0	0	0	0	0	0	100-110	0	345.8	100,21.7
120	0	0	0	0	0	0	0	0	110-120	0	345.8	100,21.7
130	0	0	0	0	0	0	0	0	120-130	0	345.8	100,21.7
140	0	0	0	0	0	0	0	0	130-140	0	345.8	100,21.7
150	0	0	0	0	0	0	0	0	140-150	0	345.8	100,21.7
160	0	0	0	0	0	0	0	0	150-160	0	345.8	100,21.7
170	0	0	0	0	0	0	0	0	160-170	0	345.8	100,21.7
180	0	0	0	0	0	0	0	0	170-180	0	345.8	100,21.7
DEG	LUMINOUS INTENSITY:cd									UNIT:lm		

C Range: 0 - 360DEG
C Interval: 30.0DEG
Test Speed: HIGH
Temperature:25.3℃
Operators:zoe
Test Date:2025-1-8

Range: 0 - 180DEG
Interval: 1.0DEG
Test System:EVERFINE GO-SPEX500_V1 SYSTEM V2.00.461
Humidity:65.0%
Test Distance:3.160m [K=1.0000]
Remarks: LAMP:BXRE-30H1000-A-83 Ra:95
LENS:SDX-Mini-Z2035-WH 20R
NOT DRIVER:48V
30minutes warm-up

LUMINANCE LIMITATION CURVES

Test:U:47.997V I:0.3033A P:14.557W PF:1.0000 Freq:0Hz
Lamp Flux:1597.41x1 lm

NAME: OZ48-SBF-64

TYPE:

WEIGHT:

SPEC.: 3000K

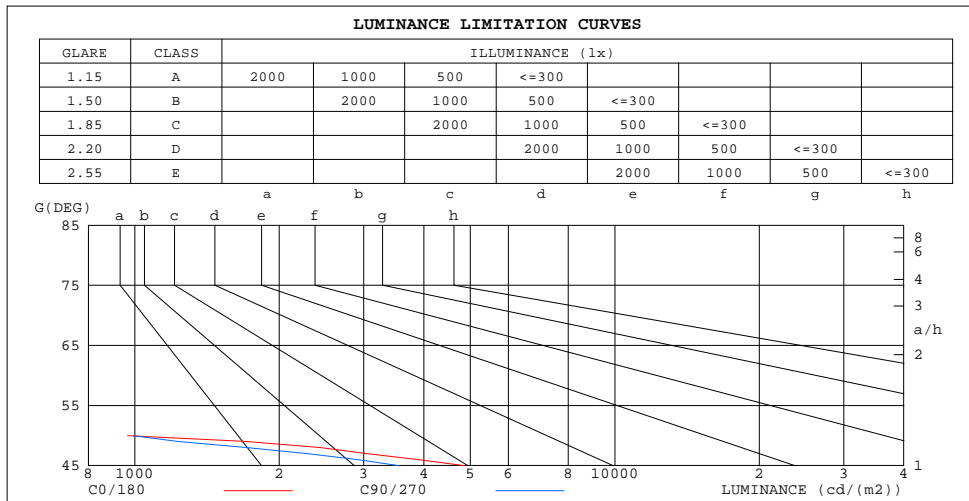
DIM.:

SERIAL No.: 2501080040

MFR.: RISE

SUR.: 0.00101736m2

Shielding Angle:



LUMINANCE cd/(m2)		
G(180)	C0/180	C90/270
85	119	73
80	64	51
75	35	33
70	37	55
65	37	87
60	83	180
55	334	462
50	965	992
45	4874	3554

C Range: 0 - 360DEG
C Interval: 30.0DEG
Test Speed: HIGH
Temperature:25.3℃
Operators:zoe
Test Date:2025-1-8

Range: 0 - 180DEG
Interval: 1.0DEG
Test System:EVERFINE GO-SPEX500_V1 SYSTEM V2.00.461
Humidity:65.0%
Test Distance:3.160m [K=1.0000]
Remarks: LAMP:BXRE-30H1000-A-83 Ra:95
LENS:SDX-Mini-Z2035-WH 20R
NOT DRIVER:48V
30minutes warm-up

CU AND LUMINAIRE BUDGETARY ESTIMATE DIAGRAM

Test:U:47.997V I:0.3033A P:14.557W PF:1.0000 Freq:0Hz
Lamp Flux:1597.4lx1 lm

NAME: OZ48-SBF-64

TYPE:

WEIGHT:

SPEC.: 3000K

DIM.:

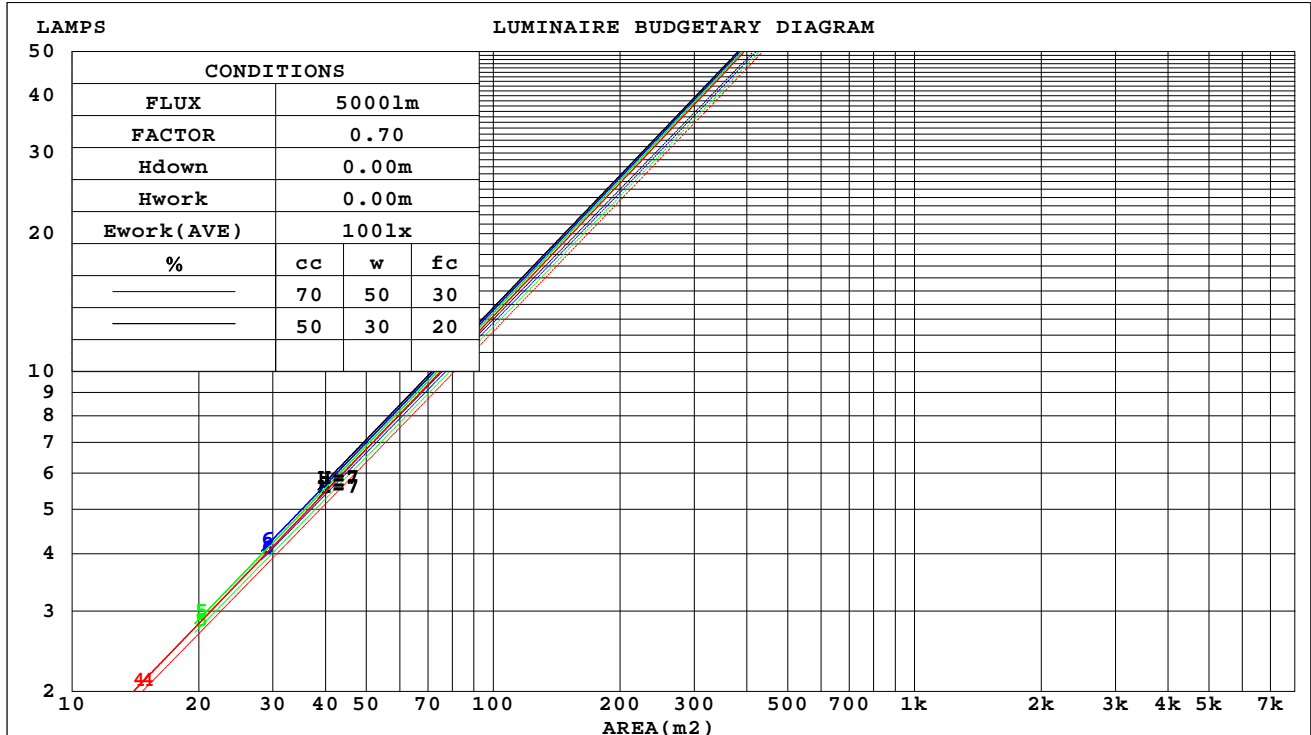
SERIAL No.: 2501080040

MFR.: RISE

SUR.: 0.00101736m2

Shielding Angle:

cc	80%			70%			50%			30%			10%			0
w	50%	30%	10%	50%	30%	10%	50%	30%	10%	50%	30%	10%	50%	30%	10%	0
fc	20%			20%			20%			20%			20%			0
RCR	RCR:Room Cavity Ratio															



C Range: 0 - 360DEG
C Interval: 30.0DEG
Test Speed: HIGH
Temperature:25.3℃
Operators:zoe
Test Date:2025-1-8

Range: 0 - 180DEG
Interval: 1.0DEG
Test System:EVERFINE GO-SPEX500_V1 SYSTEM V2.00.461
Humidity:65.0%
Test Distance:3.160m [K=1.0000]
Remarks: LAMP:BXRE-30H1000-A-83 Ra:95
LENS:SDX-Mini-Z2035-WH 20R
NOT DRIVER:48V
30minutes warm-up

WEC AND CCEC

Test:U:47.997V I:0.3033A P:14.557W PF:1.0000 Freq:0Hz Lamp Flux:1597.4lx1 lm		
NAME: OZ48-SBF-64	TYPE:	WEIGHT:
SPEC.: 3000K	DIM.:	SERIAL No.: 2501080040
MFR.: RISE	SUR.: 0.00101736m2	Shielding Angle:

cc	80%			70%			50%			30%			10%			0
w	50%	30%	10%	50%	30%	10%	50%	30%	10%	50%	30%	10%	50%	30%	10%	0
fc	20%			20%			20%			20%			20%			0
RCR	RCR:Room Cavity Ratio Wall Exitance Coefficients(WEC)															
0.0																
1.0	.023	.013	.004	.022	.012	.004	.019	.011	.004	.017	.010	.003	.014	.008	.003	
2.0	.021	.011	.004	.020	.011	.003	.018	.010	.003	.016	.009	.003	.014	.008	.002	
3.0	.019	.010	.003	.018	.010	.003	.016	.009	.003	.015	.008	.002	.013	.007	.002	
4.0	.017	.009	.003	.017	.009	.003	.015	.008	.002	.014	.007	.002	.012	.007	.002	
5.0	.016	.008	.002	.015	.008	.002	.014	.007	.002	.013	.007	.002	.012	.006	.002	
6.0	.015	.007	.002	.014	.007	.002	.013	.007	.002	.012	.006	.002	.011	.006	.002	
7.0	.014	.007	.002	.013	.007	.002	.012	.006	.002	.012	.006	.002	.011	.006	.002	
8.0	.013	.006	.002	.013	.006	.002	.012	.006	.002	.011	.006	.002	.010	.005	.002	
9.0	.012	.006	.002	.012	.006	.002	.011	.006	.002	.011	.005	.002	.010	.005	.001	
10.0	.012	.006	.002	.011	.005	.002	.011	.005	.001	.010	.005	.001	.010	.005	.001	

cc	80%			70%			50%			30%			10%			0
w	50%	30%	10%	50%	30%	10%	50%	30%	10%	50%	30%	10%	50%	30%	10%	0
fc	20%			20%			20%			20%			20%			0
RCR	RCR:Room Cavity Ratio Ceiling Cavity Exitance Coefficients(CCEC)															
0.0	.041	.041	.041	.035	.035	.035	.024	.024	.024	.014	.014	.014	.004	.004	.004	
1.0	.036	.034	.033	.031	.029	.028	.021	.020	.019	.012	.012	.011	.004	.004	.004	
2.0	.032	.029	.026	.027	.025	.023	.019	.017	.016	.011	.010	.009	.003	.003	.003	
3.0	.028	.024	.022	.024	.021	.019	.016	.015	.013	.010	.009	.008	.003	.003	.003	
4.0	.025	.021	.018	.021	.018	.016	.015	.013	.011	.009	.007	.007	.003	.002	.002	
5.0	.022	.018	.015	.019	.016	.013	.013	.011	.009	.008	.006	.006	.002	.002	.002	
6.0	.020	.016	.013	.017	.014	.011	.012	.010	.008	.007	.006	.005	.002	.002	.002	
7.0	.018	.014	.011	.016	.012	.010	.011	.009	.007	.006	.005	.004	.002	.002	.001	
8.0	.017	.013	.010	.014	.011	.008	.010	.008	.006	.006	.005	.004	.002	.001	.001	
9.0	.015	.011	.008	.013	.010	.007	.009	.007	.005	.005	.004	.003	.002	.001	.001	
10.0	.014	.010	.007	.012	.009	.006	.008	.006	.005	.005	.004	.003	.002	.001	.001	

C Range: 0 - 360DEG
C Interval: 30.0DEG
Test Speed: HIGH
Temperature:25.3℃
Operators:zoe
Test Date:2025-1-8

Range: 0 - 180DEG
Interval: 1.0DEG
Test System:EVERFINE GO-SPEX500_V1 SYSTEM V2.00.461
Humidity:65.0%
Test Distance:3.160m [K=1.0000]
Remarks: LAMP:BXRE-30H1000-A-83 Ra:95
LENS:SDX-Mini-Z2035-WH 20R
NOT DRIVER:48V
30minutes warm-up

UGR(Unified Glare Rating) Table

Test:U:47.997V I:0.3033A P:14.557W PF:1.0000 Freq:0Hz Lamp Flux:1597.4lx1 lm											
NAME: OZ48-SBF-64					TYPE:			WEIGHT:			
SPEC.: 3000K					DIM.:			SERIAL No.: 2501080040			
MFR.: RISE					SUR.: 0.00101736m2			Shielding Angle:			
ceiling/cavity	0.7	0.7	0.5	0.5	0.3	0.7	0.7	0.5	0.5	0.3	
walls	0.5	0.3	0.5	0.3	0.3	0.5	0.3	0.5	0.3	0.3	
working plane	0.2	0.2	0.2	0.2	0.2	0.2	0.2	0.2	0.2	0.2	
Room dimensions	Viewed crosswise					Viewed endwise					
x = 2H y = 2H	3H	3.9	4.3	4.1	4.4	4.6	0.9	1.4	1.1	1.5	1.6
	4H	3.7	4.2	4.0	4.3	4.5	0.8	1.2	1.0	1.4	1.6
	6H	3.7	4.1	3.9	4.3	4.5	0.7	1.1	1.0	1.3	1.5
	8H	3.6	4.0	3.8	4.2	4.4	0.6	1.0	0.9	1.3	1.5
	12H	3.5	3.9	3.8	4.2	4.4	0.6	1.0	0.9	1.2	1.5
	12H	3.5	3.9	3.8	4.1	4.4	0.6	0.9	0.9	1.2	1.4
4H	2H	3.7	4.1	3.9	4.3	4.5	0.7	1.1	1.0	1.3	1.5
	3H	3.5	3.9	3.8	4.1	4.4	0.6	0.9	0.9	1.2	1.4
	4H	3.4	3.7	3.7	4.0	4.3	0.5	0.8	0.8	1.1	1.4
	6H	3.3	3.6	3.7	3.9	4.3	0.4	0.7	0.7	1.0	1.3
	8H	3.2	3.5	3.6	3.9	4.2	0.3	0.6	0.7	0.9	1.3
	12H	3.2	3.4	3.6	3.8	4.2	0.2	0.5	0.6	0.9	1.3
8H	4H	3.2	3.5	3.6	3.9	4.2	0.3	0.6	0.7	0.9	1.3
	6H	3.1	3.4	3.5	3.7	4.1	0.2	0.4	0.6	0.8	1.2
	8H	3.0	3.3	3.5	3.7	4.1	0.1	0.3	0.6	0.7	1.2
	12H	3.0	3.2	3.4	3.6	4.1	0.0	0.2	0.5	0.7	1.1
12H	4H	3.2	3.4	3.6	3.8	4.2	0.2	0.5	0.6	0.9	1.3
	6H	3.0	3.3	3.5	3.7	4.1	0.1	0.3	0.6	0.7	1.2
	8H	3.0	3.2	3.4	3.6	4.1	0.0	0.2	0.5	0.7	1.1
Variations with the observer position at spacings(CIE Pub.117):											
S = 1.0H	+ 3.0 / -20.5					+ 2.6 / -15.1					
1.5H	+ 5.1 / -16.2					+ 4.1 / -12.4					
2.0H	+ 7.7 / -19.8					+ 7.4 / -16.0					

CIE Pub.117, 1597 lm Total Lamp Luminous Flux Correct (8log(F/F0) = 1.6)
Area: 0.00101736 m2

C Range: 0 - 360DEG
C Interval: 30.0DEG
Test Speed: HIGH
Temperature:25.3℃
Operators:zoe
Test Date:2025-1-8

Range: 0 - 180DEG
Interval: 1.0DEG
Test System:EVERFINE GO-SPEX500_V1 SYSTEM V2.00.461
Humidity:65.0%
Test Distance:3.160m [K=1.0000]
Remarks: LAMP:BXRE-30H1000-A-83 Ra:95
LENS:SDX-Mini-Z2035-WH 20R
NOT DRIVER:48V
30minutes warm-up

UTILIZATION FACTORS TABLE

Test:U:47.997V I:0.3033A P:14.557W PF:1.0000 Freq:0Hz Lamp Flux:1597.4lx1 lm		
NAME: OZ48-SBF-64	TYPE:	WEIGHT:
SPEC.: 3000K	DIM.:	SERIAL No.: 2501080040
MFR.: RISE	SUR.: 0.00101736m2	Shielding Angle:

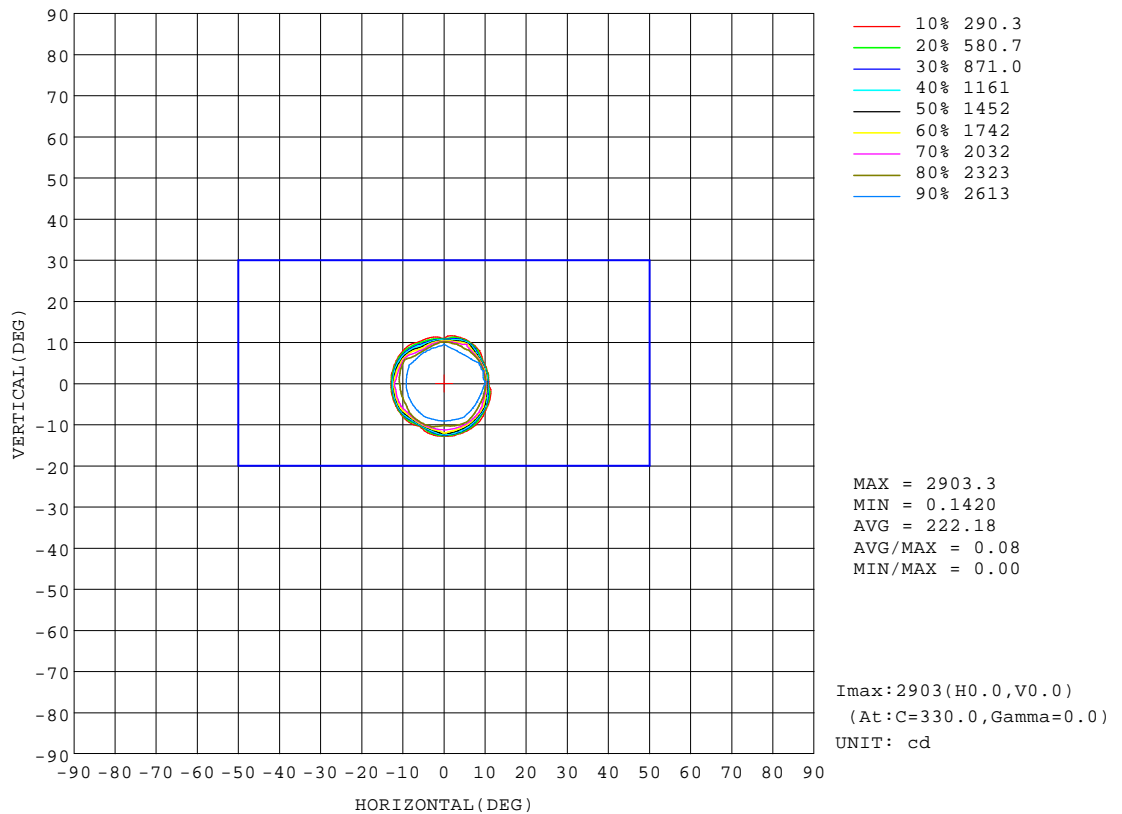
REFLECTANCE										
Ceiling	0.8	0.8	0.8	0.7	0.7	0.7	0.5	0.5	0.5	0
Walls	0.7	0.5	0.3	0.7	0.5	0.3	0.7	0.5	0.3	0
Working plane	0.2	0.2	0.2	0.2	0.2	0.2	0.2	0.2	0.2	0
ROOM INDEX	UTILIZATION FACTORS(PERCENT) $k(RI) \times RCR = 5$									
k = 0.60	20	18	18	20	18	18	19	18	18	17
0.80	21	20	19	21	20	19	21	20	19	19
1.00	22	21	20	22	21	20	22	21	20	19
1.25	23	22	21	23	22	21	22	21	21	20
1.50	23	22	22	23	22	22	23	22	21	21
2.00	24	23	22	23	23	22	23	22	22	21
2.50	24	23	23	24	23	23	23	23	22	21
3.00	24	24	23	24	23	23	23	23	22	21
4.00	25	24	24	24	24	24	24	23	23	21
5.00	25	25	24	25	24	24	24	23	23	22
ROOM INDEX	UF(total)									Direct
According to DIN EN 13032-2 2004			Suspended					SHRNOM = 1.25		

C Range: 0 - 360DEG
C Interval: 30.0DEG
Test Speed: HIGH
Temperature:25.3℃
Operators:zoe
Test Date:2025-1-8

Range: 0 - 180DEG
Interval: 1.0DEG
Test System:EVERFINE GO-SPEX500_V1 SYSTEM V2.00.461
Humidity:65.0%
Test Distance:3.160m [K=1.0000]
Remarks: LAMP:BXRE-30H1000-A-83 Ra:95
LENS:SDX-Mini-Z2035-WH 20R
NOT DRIVER:48V
30minutes warm-up

ISOCANDELA DIAGRAM

Test:U:47.997V I:0.3033A P:14.557W PF:1.0000 Freq:0Hz Lamp Flux:1597.41x1 lm		
NAME: OZ48-SBF-64	TYPE:	WEIGHT:
SPEC.: 3000K	DIM.:	SERIAL No.: 2501080040
MFR.: RISE	SUR.: 0.00101736m2	Shielding Angle:

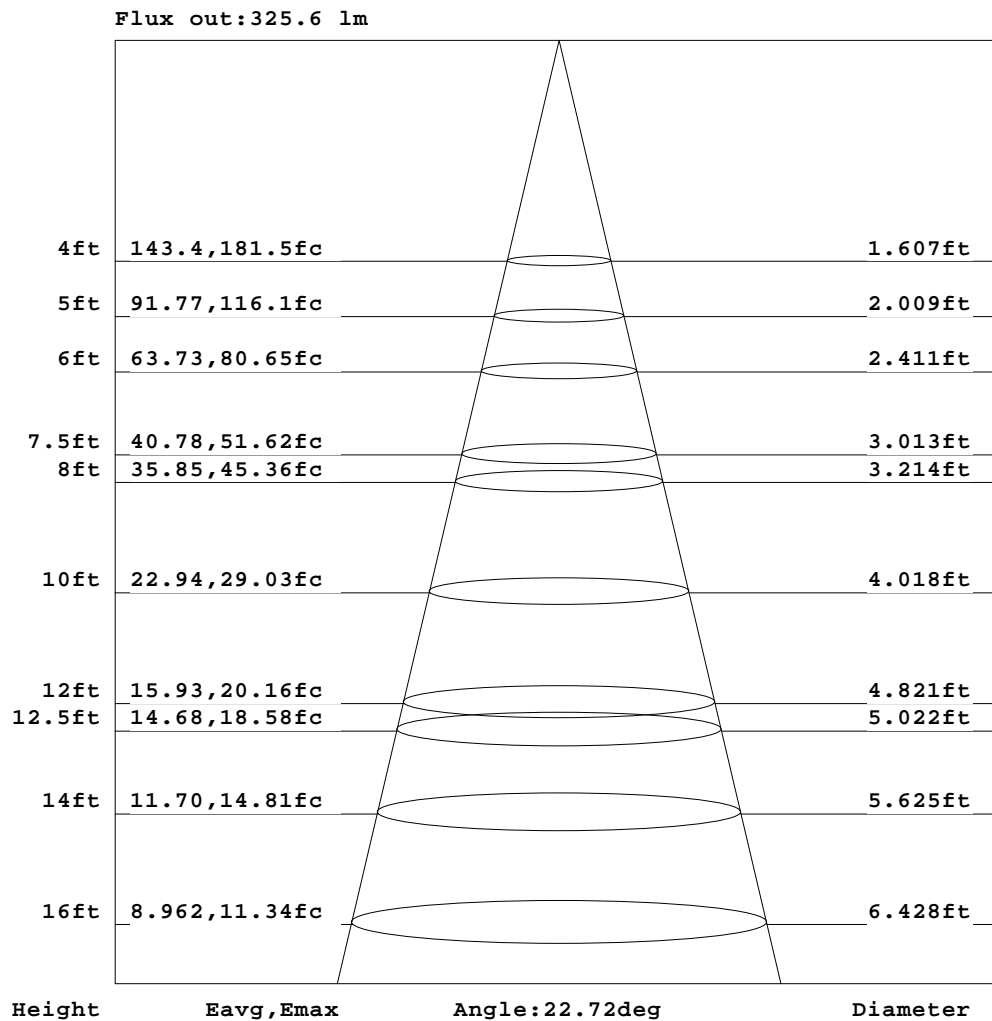


C Range: 0 - 360DEG
C Interval: 30.0DEG
Test Speed: HIGH
Temperature:25.3℃
Operators:zoe
Test Date:2025-1-8

Range: 0 - 180DEG
Interval: 1.0DEG
Test System:EVERFINE GO-SPEX500_V1 SYSTEM V2.00.461
Humidity:65.0%
Test Distance:3.160m [K=1.0000]
Remarks: LAMP:BXRE-30H1000-A-83 Ra:95
LENS:SDX-Mini-Z2035-WH 20R
NOT DRIVER:48V
30minutes warm-up

AAI Figure

Test:U:47.997V I:0.3033A P:14.557W PF:1.0000 Freq:0Hz Lamp Flux:1597.4lx1 lm		
NAME: OZ48-SBF-64	TYPE:	WEIGHT:
SPEC.: 3000K	DIM.:	SERIAL No.: 2501080040
MFR.: RISE	SUR.: 0.00101736m2	Shielding Angle:



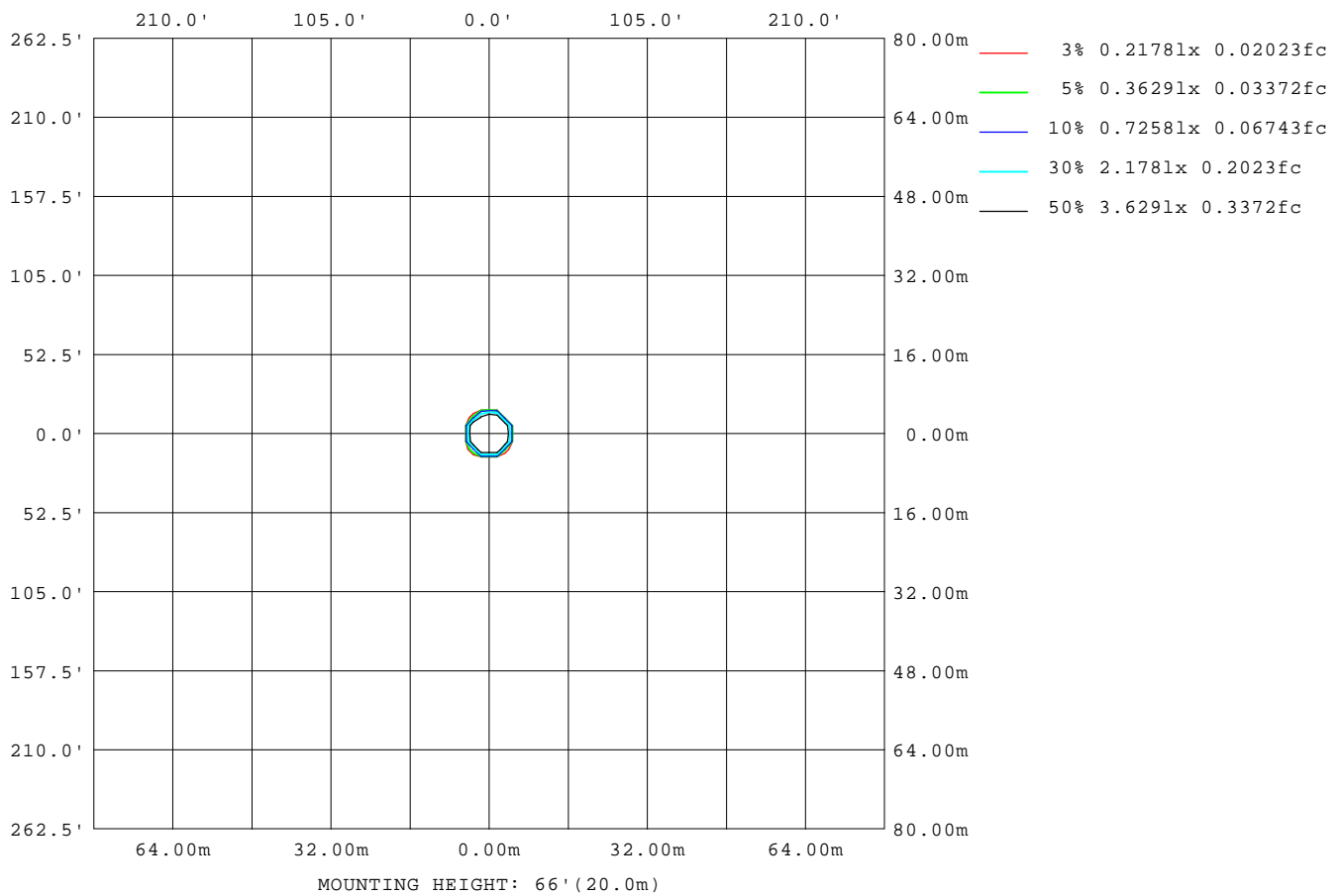
Note: The Curves indicate the illuminated area and the average illumination when the luminaire is at different distance.

C Range: 0 - 360DEG
C Interval: 30.0DEG
Test Speed: HIGH
Temperature: 25.3 °C
Operators: zoe
Test Date: 2025-1-8

Range: 0 - 180DEG
Interval: 1.0DEG
Test System: EVERFINE GO-SPEX500_V1 SYSTEM V2.00.461
Humidity: 65.0%
Test Distance: 3.160m [K=1.0000]
Remarks: LAMP: BXRE-30H1000-A-83 Ra: 95
LENS: SDX-Mini-Z2035-WH 20R
NOT DRIVER: 48V
30minutes warm-up

ISOLUX DIAGRAM

Test:U:47.997V I:0.3033A P:14.557W PF:1.0000 Freq:0Hz Lamp Flux:1597.4lx1 lm		
NAME: OZ48-SBF-64	TYPE:	WEIGHT:
SPEC.: 3000K	DIM.:	SERIAL No.: 2501080040
MFR.: RISE	SUR.: 0.00101736m2	Shielding Angle:



C Range: 0 - 360DEG
C Interval: 30.0DEG
Test Speed: HIGH
Temperature: 25.3 °C
Operators: zoe
Test Date: 2025-1-8

Range: 0 - 180DEG
Interval: 1.0DEG
Test System: EVERFINE GO-SPEX500_V1 SYSTEM V2.00.461
Humidity: 65.0%
Test Distance: 3.160m [K=1.0000]
Remarks: LAMP: BXRE-30H1000-A-83 Ra: 95
LENS: SDX-Mini-Z2035-WH 20R
NOT DRIVER: 48V
30minutes warm-up

LED Avg.L Report

Test:U:47.997V I:0.3033A P:14.557W PF:1.0000 Freq:0Hz Lamp Flux:1597.41x1 lm		
NAME: OZ48-SBF-64	TYPE:	WEIGHT:
SPEC.: 3000K	DIM.:	SERIAL No.: 2501080040
MFR.: RISE	SUR.: 0.00101736m2	Shielding Angle:

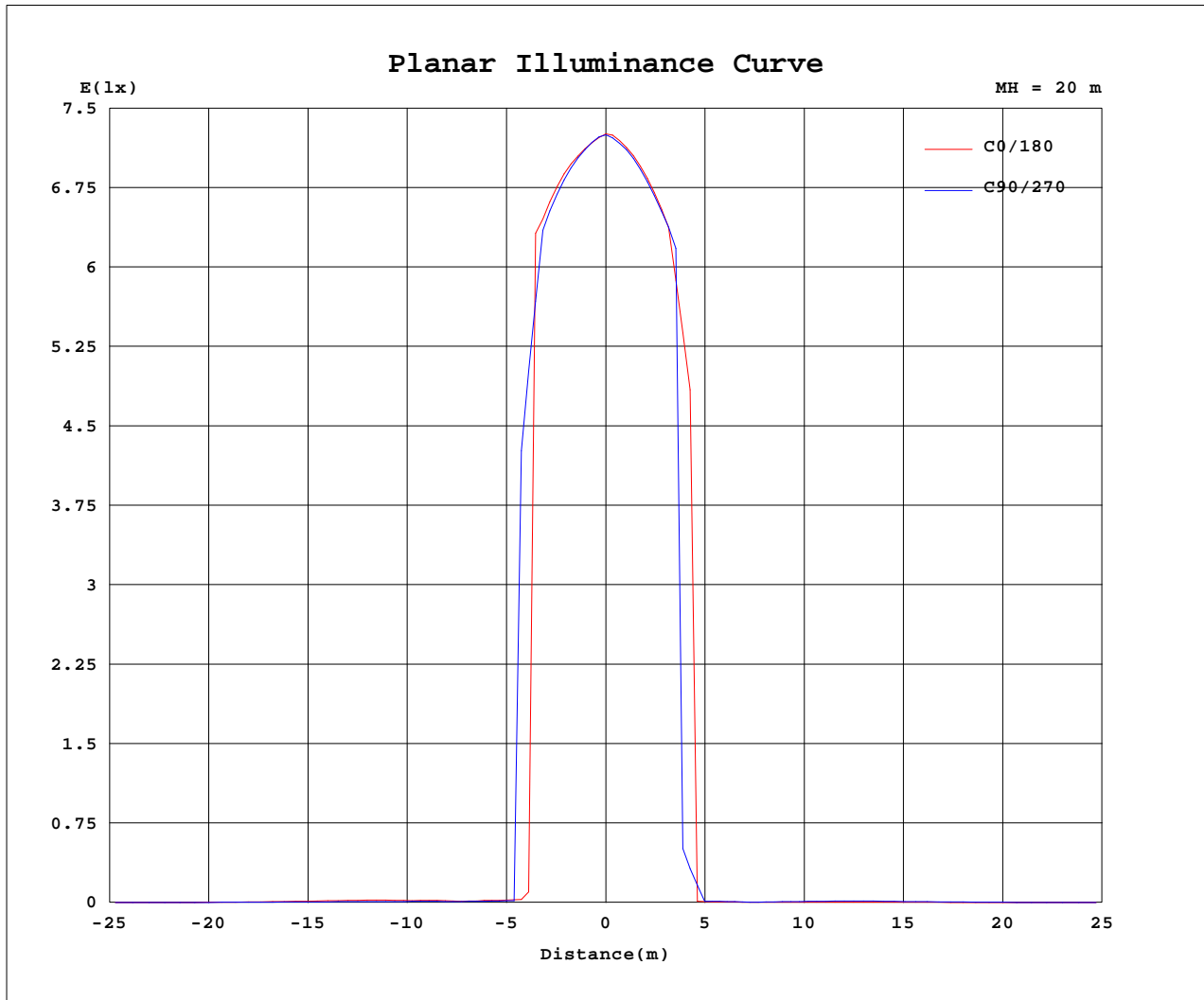
AvgL	cd/m2
L_0~180(65)av	73
L_0~180(75)av	37
L_0~180(85)av	114
L_90~270(65)av	70
L_90~270(75)av	27
L_90~270(85)av	79
L_45(65)av	68
L_45(75)av	16
L_45(85)av	8

Standard: GB/T 29293-2012

C Range: 0 - 360DEG
C Interval: 30.0DEG
Test Speed: HIGH
Temperature:25.3℃
Operators:zoe
Test Date:2025-1-8

Range: 0 - 180DEG
Interval: 1.0DEG
Test System:EVERFINE GO-SPEX500_V1 SYSTEM V2.00.461
Humidity:65.0%
Test Distance:3.160m [K=1.0000]
Remarks: LAMP:BXRE-30H1000-A-83 Ra:95
LENS:SDX-Mini-Z2035-WH 20R
NOT DRIVER:48V
30minutes warm-up

Planar Illuminance Curve



C Range: 0 - 360DEG
 C Interval: 30.0DEG
 Test Speed: HIGH
 Temperature: 25.3 °C
 Operators: zoe
 Test Date: 2025-1-8

Range: 0 - 180DEG
 Interval: 1.0DEG
 Test System: EVERFINE GO-SPEX500_V1 SYSTEM V2.00.461
 Humidity: 65.0%
 Test Distance: 3.160m [K=1.0000]
 Remarks: LAMP: BXRE-30H1000-A-83 Ra: 95
 LENS: SDX-Mini-Z2035-WH 20R
 NOT DRIVER: 48V
 30minutes warm-up



LUMINOUS DISTRIBUTION INTENSITY DATA

Test:U:47.997V I:0.3033A P:14.557W PF:1.0000 Freq:0Hz Lamp Flux:1597.4lx1 lm		
NAME: OZ48-SBF-64	TYPE:	WEIGHT:
SPEC.: 3000K	DIM.:	SERIAL No.: 2501080040
MFR.: RISE	SUR.: 0.00101736m2	Shielding Angle:

Table--1

UNIT: cd

C(DEG) (DEG)	0	30	60	90	120	150	180	210	240	270	300	330						
0	2901	2901	2901	2901	2901	2901	2901	2901	2901	2901	2901	2901						
5	2821	2817	2807	2808	2808	2814	2812	2809	2809	2802	2806	2810						
10	2645	2336	2588	2380	2571	2439	2460	2599	1771	2589	2282	2616						
15	9.98	9.35	7.81	7.46	7.04	6.94	3.69	4.16	4.16	5.30	6.48	6.89						
20	6.21	5.40	5.17	5.31	5.07	5.11	2.21	2.27	2.27	2.09	2.95	3.72						
25	10.9	9.45	7.68	7.16	5.79	5.54	2.84	3.15	3.75	5.30	7.91	9.55						
30	14.8	10.8	7.24	5.88	3.64	3.18	3.28	3.98	5.74	8.94	13.0	14.6						
35	12.8	11.2	7.28	6.23	3.55	3.11	3.21	4.13	6.38	9.82	12.2	12.5						
40	7.81	7.69	5.05	4.95	2.88	2.54	2.76	3.48	5.42	6.98	7.75	7.45						
45	3.50	3.96	2.74	2.56	1.97	1.83	2.02	2.20	3.34	3.59	3.72	2.93						
50	0.63	0.76	0.72	0.65	0.84	0.89	0.91	0.77	0.90	0.74	0.70	0.60						
55	0.20	0.21	0.24	0.27	0.28	0.32	0.31	0.30	0.26	0.22	0.20	0.19						
60	0.04	0.05	0.07	0.09	0.11	0.11	0.11	0.10	0.08	0.06	0.04	0.04						
65	0.02	0.02	0.03	0.04	0.05	0.05	0.05	0.04	0.03	0.02	0.02	0.01						
70	0.01	0.01	0.02	0.02	0.02	0.02	0.02	0.02	0.02	0.01	0.01	0.01						
75	0.01	0.00	0.01	0.01	0.01	0.00	0.01	0.01	0.00	0.01	0.00	0.00						
80	0.01	0.00	0.00	0.01	0.01	0.00	0.01	0.00	0.00	0.01	0.00	0.00						
85	0.01	0.00	0.00	0.01	0.00	0.00	0.01	0.00	0.00	0.01	0.00	0.00						
90	0.00	0.00	0.00	0.00	0.00	0.00	0.00	0.00	0.00	0.00	0.00	0.00						
95	0.00	0.00	0.00	0.00	0.00	0.00	0.00	0.00	0.00	0.00	0.00	0.00						
100	0.00	0.00	0.00	0.00	0.00	0.00	0.00	0.00	0.00	0.00	0.00	0.00						
105	0.00	0.00	0.00	0.00	0.00	0.00	0.00	0.00	0.00	0.00	0.00	0.00						
110	0.00	0.00	0.00	0.00	0.00	0.00	0.00	0.00	0.00	0.00	0.00	0.00						
115	0.00	0.00	0.00	0.00	0.00	0.00	0.00	0.00	0.00	0.00	0.00	0.00						
120	0.00	0.00	0.00	0.00	0.00	0.00	0.00	0.00	0.00	0.00	0.00	0.00						
125	0.00	0.00	0.00	0.00	0.00	0.00	0.00	0.00	0.00	0.00	0.00	0.00						
130	0.00	0.00	0.00	0.00	0.00	0.00	0.00	0.00	0.00	0.00	0.00	0.00						
135	0.00	0.00	0.00	0.00	0.00	0.00	0.00	0.00	0.00	0.00	0.00	0.00						
140	0.00	0.00	0.00	0.00	0.00	0.00	0.00	0.00	0.00	0.00	0.00	0.00						
145	0.00	0.00	0.00	0.00	0.00	0.00	0.00	0.00	0.00	0.00	0.00	0.00						
150	0.00	0.00	0.00	0.00	0.00	0.00	0.00	0.00	0.00	0.00	0.00	0.00						
155	0.00	0.00	0.00	0.00	0.00	0.00	0.00	0.00	0.00	0.00	0.00	0.00						
160	0.00	0.00	0.00	0.00	0.00	0.00	0.00	0.00	0.00	0.00	0.00	0.00						
165	0.00	0.00	0.00	0.00	0.00	0.00	0.00	0.00	0.00	0.00	0.00	0.00						
170	0.00	0.00	0.00	0.00	0.00	0.00	0.00	0.00	0.00	0.00	0.00	0.00						
175	0.00	0.00	0.00	0.00	0.00	0.00	0.00	0.00	0.00	0.00	0.00	0.00						
180	0.00	0.00	0.00	0.00	0.00	0.00	0.00	0.00	0.00	0.00	0.00	0.00						

C Range: 0 - 360DEG
C Interval: 30.0DEG
Test Speed: HIGH
Temperature:25.3℃
Operators:zoe
Test Date:2025-1-8

Range: 0 - 180DEG
Interval: 1.0DEG
Test System:EVERFINE GO-SPEX500_V1 SYSTEM V2.00.461
Humidity:65.0%
Test Distance:3.160m [K=1.0000]
Remarks: LAMP:BXRE-30H1000-A-83 Ra:95
LENS:SDX-Mini-Z2035-WH 20R
NOT DRIVER:48V
30minutes warm-up